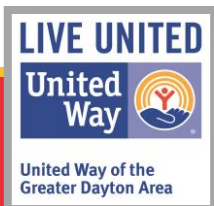


**Montgomery County Family and Children First Council
and
United Way of the Greater Dayton Area**

Working Together to Improve Lives and Make Lasting Change



**Combined Funding Application Process
Mandatory Review Sessions
January 23 and 25, 2017**



Collective Impact Approach Transition

- July 2014 Completed Community Needs Assessment
- March 2016 Completed Joint Community Strategic Plan
Community Priorities Selected
- August 2016 Collective Impact Community Training
- September 2016 Launch of Substance Abuse Priority Collective Impact
Approach – Community Overdose Action Team –
PHDMC & ADAMHS
- October –
December 2016 Alignment and Strategy discussions with
HHS Systems and Strategic Coordinators
- January 2017 Combined Funding Application Approved

Combined Funding Application Timeline

- January:** Release of the Funding Application
Proposers Conference
Question and Answer Submission & Response
- March:** Part I: Letter of Intent Due
Staff Review
FCFC and UWCPC Discuss and Finalize Recommendations
Part II: Invitations Sent to selected Applicants
Notification to the Applicants not moving to Part II
- April:** Part II: Full Funding Application Due
Staff Review
- May:** Funding Recommendations by FCFC and UWCPC
Funding Decisions by BCC and UWGDA Board
Notification to the Funded Programs
- July:** Services begin

Training Sessions:

All Training Sessions will be held at the Montgomery County Madison Lakes Learning and Conference Center located at 581 Olive Road, Dayton, Ohio 45417.

Navigating the Andar system

February 2, 2017 8:30 am – 12:00 pm

Outcomes 101 (New Applicants)

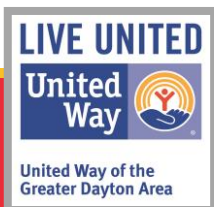
February 7, 8:30 am – 12:00 pm

Measurements 102 (New Applicants)

February 8, 8:30 am – 12:00 pm

Outcomes & Measures – Refresher

February 15, 2017 8:30 am – 12:00 pm



Technical Assistance:

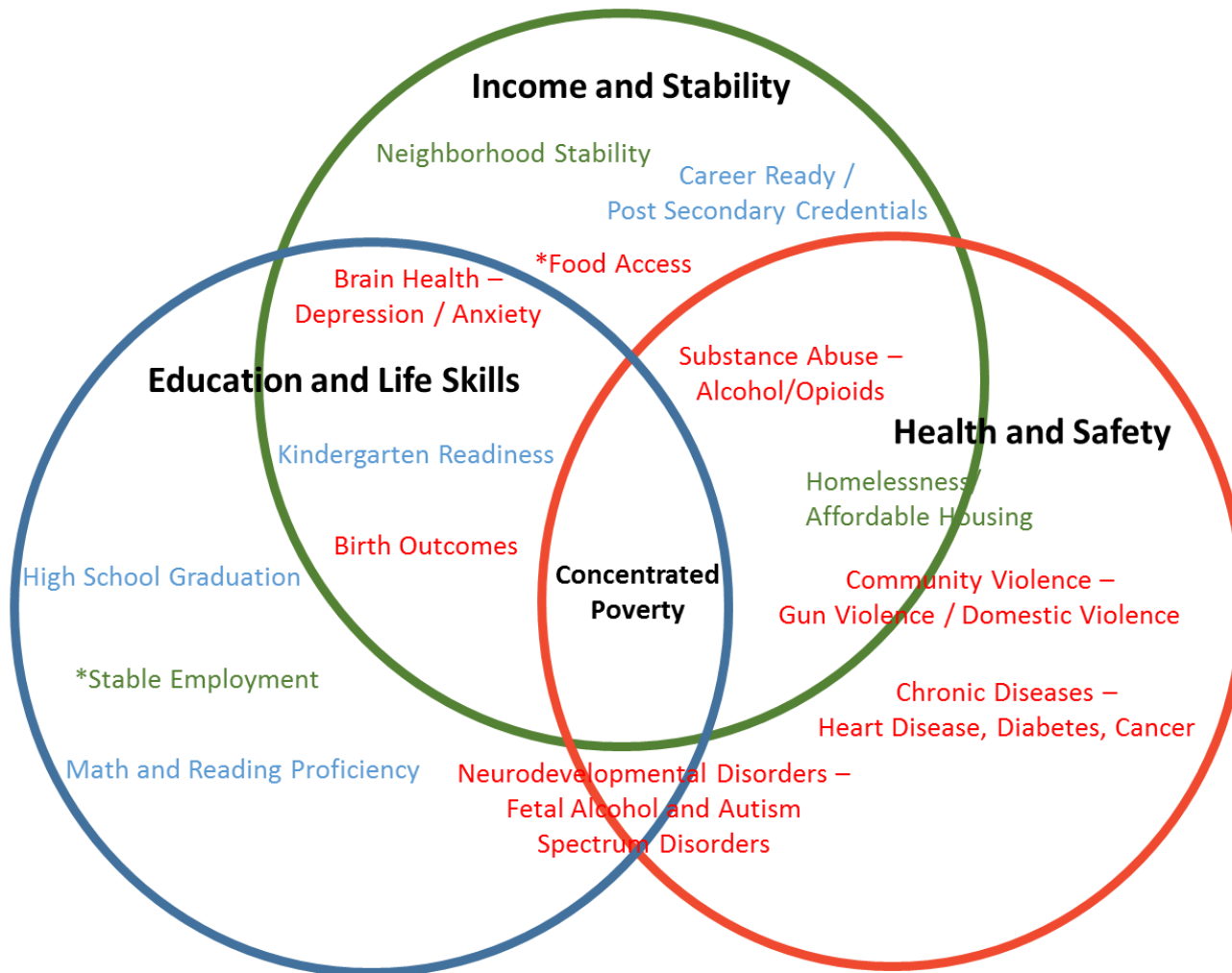
- Contact will be made with agencies that attend the informational sessions.
- Technical questions about the Combined Funding Application may be sent to hspd@mcoho.org during the following time period.

Letter of Intent: 1/24/17 through 2/24/17

Full Application: 4/3/17 through 4/21/17

- Answers will be regularly posted.

Joint Strategic Planning Focus Areas and Priorities



*These priorities appeared in two separate focus areas: Stable Employment (I&S and E&L); Food Access (I&S and H&S)

Joint Strategic Plan **Focus** and Priority Areas

<u>Education & Life Skills</u>	<u>Funding Application</u>	<u>Not In Application</u>
Kindergarten Readiness	X	Preschool Promise
Elementary Reading and Middle School Math	X	
High School Graduation	X	
Career Ready and Post Secondary Credentials	X	
<u>Income and Stability</u>		
Neighborhood Stability		Need More Research
Stable Employment	X	
Homelessness and Affordable Housing	X	Affordable Housing - Need More Research
<u>Health & Safety</u>		
Food Access	X	
Substance Abuse - Alcohol and Opioids		ADAMHS & PHDMC - COAT
Community Violence - Gun Violence and Domestic Violence	X	CIRGV - Gun Viol.
Chronic Diseases - Heart Disease, Diabetes, Cancer		PHDMC - CHIP
Brain Health - Depression and Anxiety		PHDMC - CHIP
Birth Outcomes		PHDMC - CHIP
Neurodevelopmental Disorders - FASD and Autism		Need More Research

Collective Impact Services Being Sought

Focus and Priority Areas

Education and Life Skills

Kindergarten Readiness
Elementary Reading Proficiency
Middle School Math
High School Graduation
Career Ready / Post Secondary Credentials

Income and Stability

Stable Employment
Homelessness

Health and Safety

Food Access
Community Violence – Domestic Violence



Defining Collective Impact

- **Common Agenda:** Shared vision for change that includes a common understanding of the problem and a joint approach to solve the problem through agreed-upon actions;
- **Shared Measurement:** All participating organizations agree on the ways success will be measured and reported, with a short list of common indicators identified and used for learning and improvement;
- **Mutually Reinforcing Activities:** A diverse set of stakeholders, typically across sectors coordinate a set of differentiated activities through a mutually reinforcing plan of action;

Defining Collective Impact

- **Continuous Communication:** All agencies engage in frequent communication to build trust, assure mutual objectives and create common motivation;
- **Backbone Support Organization: (Strategic Coordinators)**
An independent, staff dedicated to the initiative provides ongoing support by guiding the initiatives vision and strategy, supporting aligned activities, establishing shared measurements practices, building public will, advancing policy and mobilizing resources.
- **Community Training video available at www.mcoho.org/hspd**

Services Being Sought

Organizations that operate services according to the quality program standards below:

- Well-defined goals/outcomes
- Research-supported and structured programming
- Sustained attendance
- Trained staff
- Promotes family involvement
- Develops positive supportive relationships
- Builds community partnerships
- Diverse program participants
- Promotes safety, health and wellness
- Ongoing evaluation and continuous quality improvement

Eligibility

Organizations seeking funding through this combined funding application:

- Must attend at least one of two scheduled Mandatory informational sessions
- Must be a 501(c)(3) non-profit, tax exempt organization
- Must provide a health or human service
- Must provide services in Montgomery County
- Must be in existence for at least one year
- Must not proselytize or use religious content as part of the services for which funding is requested
- Must not engage in political activity with the funds
- Must be registered to do business in the State of Ohio
- Must be current on all taxes
- Must not be a government organization or special purpose unit of government

Services Being Sought

Core Safety Net Services – essential services that help individuals manage an immediate crisis and emergency needs.

Evidence-Based Strategies – Evidence-based strategies are identified in the funding application, however, organizations may submit an evidence-based strategy not listed that meets the established criteria in the application.

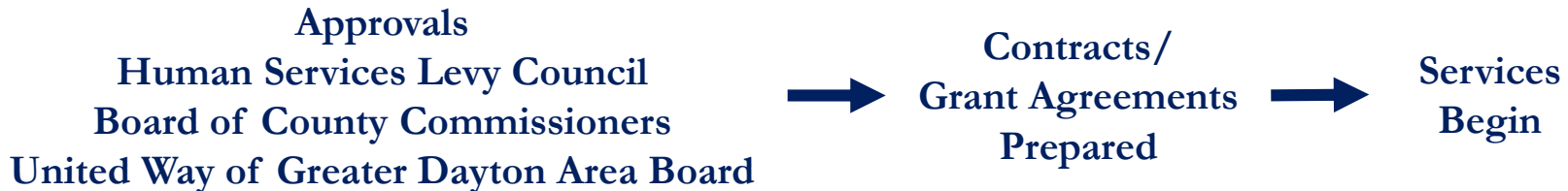
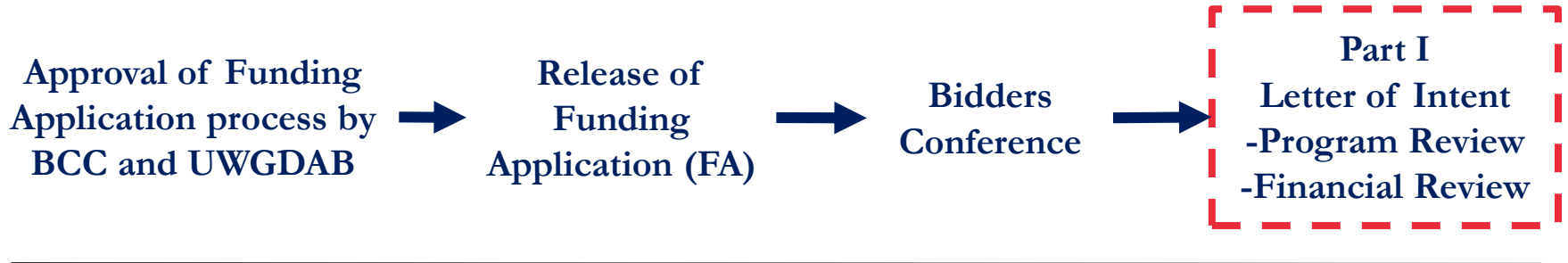
Prevention Services – build strength (individual, family, community level) and invest in future risk reduction

Intervention Services – reverse hardships, reduce level of need, and move toward stability

- **General Supported Services**
- **Homeless Supported Services**
- **Frail Elderly Supported Services**

Combined Funding Process Summary

July – June Funding Cycle



Part I – Letter of Intent (LOI)

Initial review and vetting of proposed services

Letter of Intent

- Eligibility
- Summary of proposed services and whether the services address an identified community need
- Budget
- Financial capacity of the organization

Financial/Organizational Information

- Audit
- Tax Return
- Organization/Agency Budget
- Board Roster
- Financial Statements
- Patriot Act Compliance
- Disclosures
- IRS Determination Letter

Full list on page 29

Part II – Full Application

Only those applicants who are successfully selected through the Letter of Intent process will be invited to complete a Full Application for requested services to begin July 1, 2017.

- **Program Narrative - Specific details about the proposed activity/strategy – how the program addresses the basics of who is being served, how are they being served, where and when are they being served, why are they being served/statement of need, etc.**
- **Program Evaluation - short-term, intermediate, long-term outcomes**
- **Program Budget – Revenue/Expenses and Narrative**

Combined Funding Application Section Comparison

	Core Safety Net Services & Frail Elderly Supported Services	General Supported Services	Homeless Supported Services
Two-Part Application	Same	Same	Same
Financial Information Required	Same	Same	Same
Collaborative Projects	Not Required	Required	Required
Project Evaluation	Program Outcome Measurement	Program Outcome Measurement	HMIS Data Collection (APR & System Performance Measures)
Submission Protocol	ANDAR System UWGDA	ANDAR System UWGDA	PDF Email Submission to Montgomery County
Reviewers/Review Process	Staff/FCFC UW-CPC/ MCFESAC PPEC (Homeless Safety Net Services)	Staff/FCFC UW-CPC	PPEC/ HSPB Executive Committee
Funding Available	Levy, United Way & ESG	Levy, United Way	Levy, United Way, ESG HOME



Length of Funding

All agreements resulting from this process will be subject to certain timing guidelines.

- Selected applications may be awarded multi-year agreements up to and including five years beginning July 1, 2017.
- Selected agreements will be negotiated collaboratively but executed with each collaborative partner, independently by funding source.

Combined Funding Application Deadlines

	General Supported Services	Core Safety Net & Frail Elderly Supported Services	Homeless Supported Services
Submission Protocol	Andar System UWGDA	Andar System UWGDA	Email to Montgomery County
Part I Letter of Intent Deadline	March 3, 2017		
Financial Information Required	March 3, 2017		
Invitation to Part II	No later than March 31, 2017		
Part II Application Deadline - if invited	April 28, 2017		
Funding Notification	No later than May 31, 2017		

Core Safety Net Services Combined Funding Application **OVERVIEW**



Core Safety Net Services

Essential services that help individuals manage an immediate crisis and emergency needs by providing food, shelter, medical care and freedom from violence:

- **Emergency Food** – helps individuals access nutritious food and avoid hunger
- **Medical Care** – assistance to uninsured/under-insured for prescription assistance, medical supplies for chronic diseases, and emergency dental assistance
- **Emergency Freedom from Violence** – protects individuals from domestic violence and provides access to immediate crisis hotline and resources
- **Emergency Shelter** – immediate overnight shelter (this does not include case management or other supported housing programs)

Core Safety Net Services

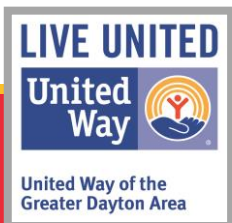
Process is as just described

Part 1 - Each organization will be expected to complete and submit a Letter of Intent and required Financial Documents

Part 2 – Only those applicants who are successfully selected through the Letter of Intent process will be invited to complete a Full Application for requested services to begin July 1, 2017.

Applicants are required to identify collaborators and linkages to other services in the community.

General Supported Services Combined Funding Application **OVERVIEW**



General Supported Services

Ties back to

- Joint Strategic Plan
- Community Needs Assessment
- Collective Impact

Requires

- Collective Impact Approach
- Use of Evidence-Based Practices

Priority Area	Community-Level Outcome and Why It Matters	Population Level Measures
Kindergarten Readiness	<p>60% of children will be kindergarten-ready <i>A significant percentage of Montgomery County children do not have the skills required for kindergarten when they start. Local research indicates that to have an 87% probability of earning a proficient score on the third grade reading test requires a KRA score of at least 18 to 21. Where children start has an impact that cannot be negated by more time in school.</i></p>	Kindergarten readiness assessment (KRA) scores
3 rd Grade Reading Proficiency	<p>100% of children will have 3rd grade reading proficiency <i>Too many Montgomery Students are unable to reach the proficient levels in reading by critical points in their elementary school years. There is substantial evidence that proficiency test scores in elementary and middle school are predictive of high school dropout rates. In addition, the proficiency tests themselves are markers of other issues in students' lives, such as food insecurity.</i></p>	Ohio Department of Education 3 rd grade reading proficiency
8 th Grade Math Proficiency	<p>100% of children will have 8th grade math proficiency <i>Too many Montgomery Students are unable to reach the proficient levels mathematics by 8th grade. There is substantial evidence that proficiency test scores in middle school are predictive of high school dropout rates. In addition, the proficiency tests themselves are markers of other issues in students' lives, such as food insecurity.</i></p>	Ohio Department of Education 8 th grade math proficiency
High School Graduation	<p>Increase high school graduation rate to 95% <i>High School graduation is critical as an entree to further education and stable employment opportunities. In Montgomery County, only 4 out of every 5 (79.7%) students who entered 9th grade four years earlier graduate from high school. High school drop outs have a very difficult time sustaining even a low-wage job, and earning an income that can sustain family life is problematic.</i></p>	Ohio Department of Education 4-Year longitudinal graduation rate
Career Ready/ Post Secondary Credentials	<p>60% of adults between ages 25 and 64 will have a college degree or post-high school credential, 90% of high school graduates will enroll in some type of post-secondary education <i>By 2020, 46% of jobs in Montgomery County will require a degree, while about 34% of adults have a degree. Considering all credentials, 63% of jobs will require at least a post-high school credential. Given that many people start college, but do not earn a degree, certificates are attainable and they also “pay,” (e.g., monthly earnings for those with less than a high school education are \$1,920 with no other credential and \$2,419 with a professional certification or license). A certificate is also a stepping-stone to college.</i></p>	Ohio Department of Education Educational attainment, college enrollment, college persistence, college graduation
Food Access	<p>Reduce food insecurity <i>Many communities lack access to affordable, quality food including fruits, vegetables, whole grains, low fat milk, and other items that comprise a healthy diet. Hunger and food insecurity have been linked to chronic diseases, behavioral problems, poor academic performance, and more.</i></p>	Feeding America Survey
Domestic Violence	<p>Reduce the number of domestic violence homicides <i>Domestic violence is the most common form of violence, especially against women. Domestic violence is a major contributor to poor mental and physical health of victims. Children who experience violence are likely to be violent themselves.</i></p>	Montgomery County Coroner report
Stable Employment	<p>Increase the number of individuals who have employment stability. (Increase median household income) <i>*Census figures indicate that over 55,000 working-age Montgomery County residents last worked over five years ago or never worked. The living wage for Montgomery County is reported to be \$9.55/hour for one adult and \$19.92/hour for one adult and one child. The impact of advancing one educational attainment level for 10% of Montgomery County adults ages 25-34 who currently have no post-secondary education would generate over \$13 million in increased earnings annually.</i></p>	Bureau of Labor Statistics Job availability rate Unemployment rate Census Bureau Median income

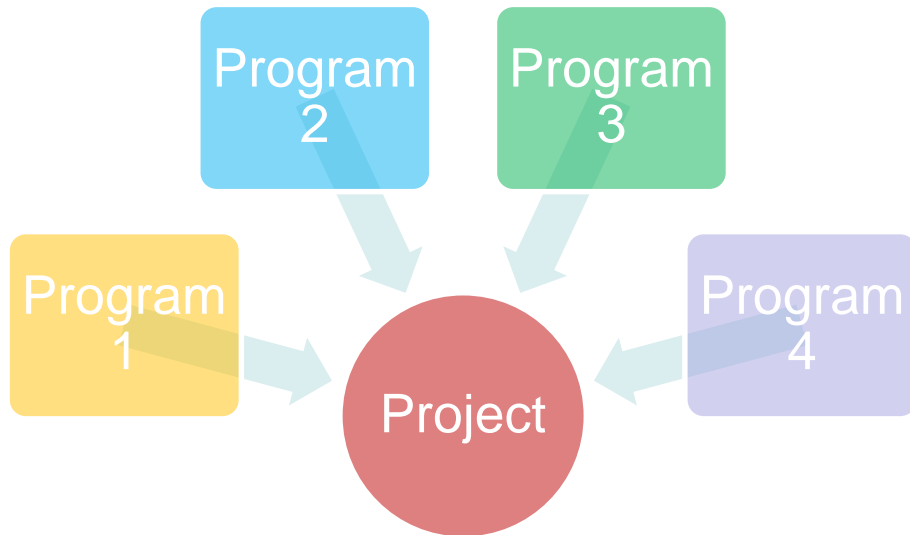
General Supported Services

Review of Goals, Strategies, Priorities

- Priority area and sector leader (strategic coordinator)
- Statement of a community-wide outcome, the population level indicator and why it matters
- Goals
- Examples of strategies - must be evidence-based
- Best Practice Measures (not exclusive)
- Required Measures
- Measures that relate to the community indicator

General Supported Services – Part 1

Project Letter of Intent



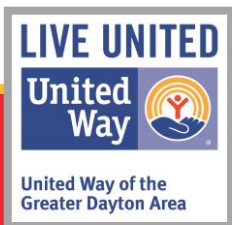
- **Project Narrative**
 - Overall description of the project
 - Address the elements of Collective Impact
- **Collaboration**
 - Identify partners and their roles (mutually reinforcing activities)
 - Identify selected evidence based strategies
- **Project Budget**
 - Funding request with details
- **Required Financial Documents**

Part II – General Supported Services Application

Only those applicants who are successfully selected through the Letter of Intent process will be invited to complete a Full Application.

- **Project Narrative** –
Expanding on the LOI questions to further reflect the use of collective impact to address a strategic priority
- **Program Narrative**
Specific program details about the proposed activity/strategy – how the program addresses the basics of who is being served, how are they being served, where and when are they being served, why are they being served (refer to Joint Strategic Plan), etc.
- **Program Evaluation** - Short-Term, Intermediate, Long-Term Outcomes
- **Program Budget Revenues/Expenses and Narrative**

Homeless Supported Services Combined Funding Application **OVERVIEW**



Homeless Supported Services

Non-emergency programs and services that align with the Joint Strategic Plan and the 10-Year Plan to End Chronic Homelessness and Reduce Overall Homelessness in Montgomery County.

Homeless Supported Services Combined Funding Application (CFA)

Seeks Collaborative Projects to reduce the number of households who experience homelessness in Montgomery County by advancing one (or more) of the following goals:

- **End Chronic Homelessness by 2017.**
- **End Family Homelessness by 2020.**
- **End Youth Homelessness by 2020.**
- **Reduce Overall Homelessness for Single Adults by 2020.**

Evidence-Based Project Activities

- ✓ Prevention
- ✓ Street Outreach
- ✓ Rapid Rehousing
- ✓ Transitional Housing
- ✓ Permanent Supportive Housing
- ✓ Affordable Rental Housing
- ✓ Supportive Services
- ✓ Housing
- ✓ Employment
- ✓ Healthcare
- ✓ Education and Life Skills

Homeless Supported Services Funding Sources

- Montgomery County Human Services Levy
- City of Dayton ESG
- United Way Community Impact Fund
- Montgomery County HOME
- Montgomery County ESG

Frail Elderly Supported Services Combined Funding Application **OVERVIEW**



Frail Elderly Services Combined Funding Application (CFA)

Seeks **Programs** to improve the quality of life for those age 60 and over with income under 200% of the federal poverty rate by advancing one (or more) of the following areas:

- **Help Elderly individuals remain as independent as possible**
- **Enhancement of transportation systems for elderly**
- **Services that support caregivers of the frail elderly**

Frail Elderly Supported Services

Emergency programs and services that advance the goals and objectives of Frail Elderly Services Advisory Committee.

Examples:

- ✓ Respite Care
- ✓ Emergency Home Meal Delivery
- ✓ Healthcare & Medication Services

Frail Elderly Supported Services

Non-emergency programs and services that advance the goals and objectives of Frail Elderly Services Advisory Committee. Frail Elderly Supported Services are intended for those age 60 and over with income under 200% of the federal poverty rate.

Frail Elderly Supported Services

Examples:

- ✓ Legal Services
- ✓ Caregiver Services
- ✓ Non- Medical Transportation
- ✓ Case Management
- ✓ Home Repair

Evidence-Based Project Activities

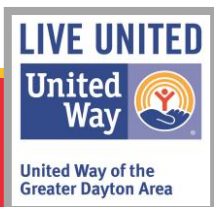
- ✓ Transportation
- ✓ Non-Emergency Home Repair
- ✓ Supportive Services
 - ✓ Housing
 - ✓ Employment
 - ✓ Healthcare
 - ✓ Education and Life Skills

Frail Elderly Support Services

Part 1 - Each organization will be expected to complete and submit a Letter of Intent and required Financial Documents

Part 2 – Only those applicants who are successfully selected through the Letter of Intent process will be invited to complete a Full Application for requested services to begin July 1, 2017.

Applicants are required to identify collaborators and linkages to other services in the community.



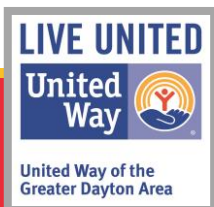
Combined Funding Application Deadlines

	General Supported Services	Core Safety Net & Frail Elderly Supported Services	Homeless Supported Services
Submission Protocol	Andar System UWGDA	Andar System UWGDA	Email to Montgomery County
Part I Letter of Intent Deadline	March 3, 2017		
Financial Information Required	March 3, 2017		
Invitation to Part II	No later than March 31, 2017		
Part II Application Deadline - if invited	April 28, 2017		
Funding Notification	No later than May 31, 2017		

Technical Assistance Questions:

Combined Funding Application - hspd@mcoho.org

Andar System - jointrfpinfo@Dayton-unitedway.org



Questions?

